



LT4000

pcmcia smart card reader

User's Manual

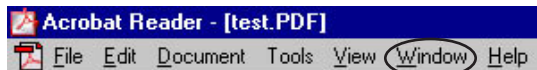
Welcome to the MAKO Technologies Infineer LT4000 User's Manual. This manual provides easy to follow, step-by-step instructions for connecting the MAKO Technologies Infineer LT4000 Smart Card Reader and installing its associated software.

Contents

- Introduction
- MAKO Technologies Infineer LT4000 Description
- System Requirements
- MAKO Technologies Infineer LT4000 Installation Software
- MAKO Technologies Infineer LT4000 Quick Installation Procedure
- MAKO Technologies Infineer LT4000 Step-by-Step Installation Instructions
- Uninstalling the MAKO Technologies Infineer LT4000 Software
- MAKO Technologies Reader Utility
- Technical Support
- Adobe Acrobat Reader
- Warranty/Conditions
- MAKO Technologies Infineer LT4000 FAQ

Navigating The Online User Manual

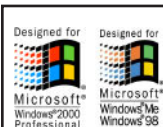
Acrobat Reader's Bookmarks and Thumbnail viewing options are active in this manual. To enable these options select Window, Show Bookmarks and/or Show Thumbnails from Acrobat's Menu bar.



Acrobat Reader's Navigation buttons may also be used to move through this document.



For more information about MAKO Technologies, please visit our Web site at www.mako-tech.com.



The MAKO Technologies Infineer LT4000 has passed testing by Microsoft's Windows Hardware Quality Labs (WHQL) for Windows 2000 Professional, 98 and ME operating systems.

"Microsoft, Windows, and the Windows Logo are registered trademarks of Microsoft Corporation in the United States and/or other countries."



LT4000

pcmcia smart card reader

User's Manual

Page 2

Introduction

MAKO Technologies designs and markets the Infineer line of intelligent, microcontroller-based smart card reader/writers. Electronic commerce, financial services, access control, security, and identification are just a few of the smart card-based applications in which these readers can be used.

MAKO Technologies Infineer Readers maintain full compliance with Microsoft PC/SC standards and with Windows 95/98, Windows Me, Windows 2000 and NT4, and Linux operating systems. Additionally, they are compliant with most of today's accepted financial/banking (EMV) and regulatory standards.

MAKO Technologies currently offers three reader/writer models to accommodate most any system:

- MAKO Technologies Infineer DT3500 (USB)
- MAKO Technologies Infineer DT3000 (serial)
- MAKO Technologies Infineer LT4000 (PCMCIA)

This CD, software, and documentation are specific to the MAKO Technologies Infineer LT4000 model.

MAKO Technologies Infineer LT4000 Description

The MAKO Technologies Infineer LT4000 is a fast, microcontroller based PCMCIA reader/writer that communicates with your system through a standard Type II PCMCIA port.

System Requirements

- Pentium® or faster processor
- Microsoft® Windows 9x, Windows ME, NT4 or 2000, Linux
- CD-ROM drive
- Available Type II PCMCIA port
- Internet connection (recommended)

MAKO Technologies Infineer LT4000 Installation Software

The MAKO Technologies Infineer LT4000 installation software was designed to make the installation process seamless—requiring minimal user interaction. The installation software detects your computer's operating system and installs the appropriate drivers and files for that system. The entire MAKO Technologies Infineer LT4000 installation procedure (hardware and software) takes approximately five minutes to complete.



LT4000

pcmcia smart card reader

User's Manual

Page 3

MAKO Technologies Infineer LT4000 Quick Installation Procedure

This Quick Installation Procedure offers an easy-to-follow path on how to install and connect the MAKO Technologies Infineer LT4000 PCMCIA Smart Card Reader. For detailed instructions please see section "MAKO Technologies Infineer LT4000 Step-by-Step Installation Instructions" in this manual.

Installing the MAKO Technologies Infineer LT4000 Software

Before you connect the MAKO Technologies Infineer LT4000 to your PC, it is important that its software be installed on your system. Follow the steps below to install the MAKO Technologies Infineer LT4000 software.

- 1** Start your computer and close all software applications that may be running. Insert the MAKO Technologies Infineer LT4000 Installation CD into your system's CD-ROM drive.
- 2** The CD should autorun and display the MAKO Technologies Infineer LT4000 welcome screen. If your CD runs automatically, skip ahead to Step 4. Otherwise, double-click on the My Computer icon on your Desktop.
- 3** Double-click the CD-ROM drive letter and double-click the autorun.exe file on the MAKO Technologies Infineer LT4000 Installation CD.
- 4** Select the "Software" option from the MAKO Technologies Infineer LT4000 Welcome Screen and select "Install the MAKO Technologies Infineer LT4000 Software" from the subsequent screen.
- 5** Follow the onscreen prompts.

Note for Windows 9x, ME and NT4 Users: When you select Finish at this prompt the installer will automatically shutdown your machine in order to complete the software installation.

- 6** Attach the MAKO Technologies Infineer LT4000 to your system.

Note for Windows 9x, ME and NT4 Users: Connect the MAKO Technologies Infineer LT4000 to your computer before you reboot your machine.

See "Connecting the MAKO Technologies Infineer LT4000" on page 4 for instructions on attaching the reader to your system.



LT4000

pcmcia smart card reader

User's Manual

Page 4

Connecting the MAKO Technologies Infineer LT4000

Now that you've installed the software you're ready to connect the MAKO Technologies Infineer LT4000 to your PC. The MAKO Technologies Infineer LT4000 is a PC Card device and may be connected to your computer when it is powered-down or while the system is up and running.

Note for Windows 9x, ME and NT4 Users: Connect the MAKO Technologies Infineer LT4000 to your computer before you reboot your machine. For more information on this practice, see the "MAKO Technologies Infineer LT4000 FAQ" on page 18.

- 1** Connect the MAKO Technologies Infineer LT4000 to your PC after the software installation has been completed. Fully insert the MAKO Technologies Infineer LT4000 (A) into an available Type II PCMCIA slot (B) in your PC. See Figures 1 and 2 below. Be sure to insert the end of the MAKO Technologies Infineer LT4000 with "Insert This Side" printed on the label. Insert the MAKO Technologies Infineer LT4000 completely into the PCMCIA slot (C).
 - 2** If your computer is running, you may hear a "two-tone" beep when the MAKO Technologies Infineer LT4000 is inserted. This beep signals that the reader has been recognized and is ready to use.
- Please see section "Disconnecting the MAKO Technologies Infineer LT4000" on page 6 for instructions on how to properly remove the device from your system.

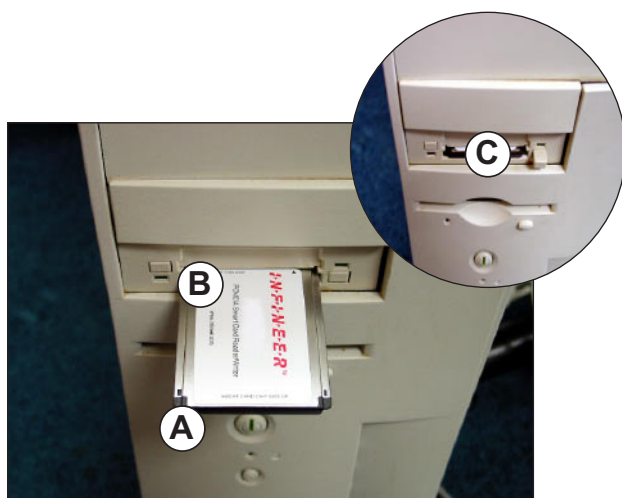


Figure 1
MAKO Technologies Infineer LT4000
in a Desktop Computer

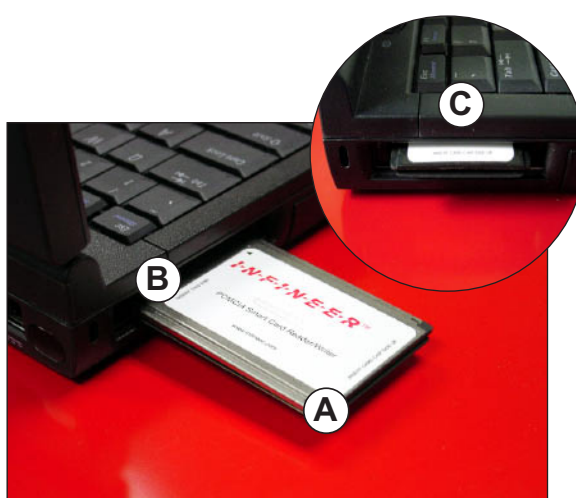


Figure 2
MAKO Technologies Infineer LT4000
in a Laptop Computer



LT4000

pcmcia smart card reader

User's Manual

Page 5

Inserting a Smart Card Into the MAKO Technologies Infineer LT4000

Insert a smart card between the two (top and bottom) flaps of the MAKO Technologies Infineer LT4000.

Be sure to insert the smart card chip face up. The chip must face up in order for the MAKO Technologies Infineer LT4000 to interact with the card. See Figure 3 below.



Figure 3 Insert Card "Chip Side Up"



User's Manual

Page 6

Disconnecting the MAKO Technologies Infineer LT4000

Although you may connect the MAKO Technologies Infineer LT4000 to your system at any time, you should follow a proper sequence when you disconnect the reader.

You may encounter unexpected errors and lose data if you improperly disconnect any PCMCIA device from your computer.

To properly disconnect the MAKO Technologies Infineer LT4000 from your computer follow the 3 steps below.

- 1 Double-click on the PC Card Status icon in your System Tray. The System Tray should be located on your desktop in your Toolbar. Figures 4 and 5 display a typical PC Card Status icon in Windows.



Figure 4 PC Card Status Icon in Windows 98



Figure 5 PC Card Status Icon in Windows 2000

- 2 The PC Card Properties box appears. In this box, select the MAKO Technologies Infineer LT4000 SmartCard Reader and click the Stop button. See Figure 6.

If the check box next to "Display warning if card is removed before it is stopped" is selected in the PC Card Properties box, Windows will warn you if a PC Card device has been improperly removed from your computer.

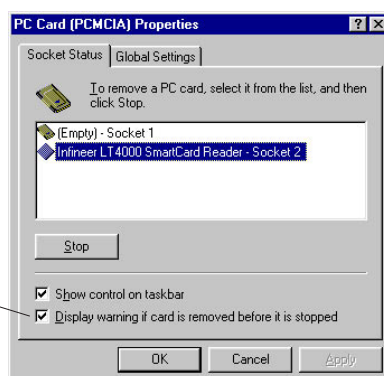


Figure 6 PC Card Properties

- 3 You may now safely disconnect the MAKO Technologies Infineer LT4000 from your computer.



User's Manual

Page 7

MAKO Technologies Infineer LT4000 Step-by-Step Installation Instructions

The MAKO Technologies Infineer LT4000 software installer MUST BE RUN before physically connecting the MAKO Technologies Infineer LT4000 to your system. Do not connect the reader to your system prior to running the software installer.

- 1 Insert the MAKO Technologies Infineer LT4000 Installation Software CD into your system's CD-ROM drive. The CD will autorun and a welcome screen (similar to Figure 7) will be displayed on your monitor.
- 2 Choose the "Software" option to begin the software installation.



Figure 7 MAKO Technologies Infineer LT4000 CD Welcome Screen

A screen similar to Figure 8 will appear. This screen provides you with additional information about the MAKO Technologies Infineer LT4000 installation procedure.

- 3 Choose the "Install the MAKO Technologies Infineer LT4000 Software" option to continue the installation.



Figure 8 MAKO Technologies Infineer LT4000 Install Software



User's Manual

Page 8

If the “Install the MAKO Technologies Infineer LT4000 Software” option was selected in Step 3, the Windows Install Wizard begins. A screen similar to Figure 9 should appear.

**Note - You may be prompted to reboot your system if the Windows Installer service has not already been installed. By doing so, the service will be installed on your system automatically. Do not physically attach the MAKO Technologies Infineer LT4000 to your system at this time.*

- 4 Choose the Next button to continue.



Figure 9 MAKO Technologies Infineer LT4000 Installer Wizard

The End User License Agreement (EULA) appears. See Figure 10.

- 5 Click the Accept button to agree to the licensing terms.
Choose the Next> button to continue.

**Note - If you choose not to accept the terms of the license agreement the installation will not continue.*

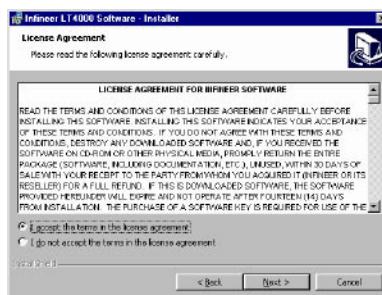


Figure 10 MAKO Technologies Infineer LT4000 End User License Agreement



User's Manual

Page 9

The installer is ready to install the MAKO Technologies Infineer LT4000 software as shown in Figure 11.

- 6 Choose the Install button to continue.

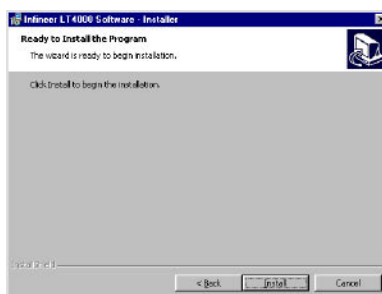


Figure 11 Ready to Install

The Windows Installer is now installing the drivers and components that the MAKO Technologies Infineer LT4000 needs to operate. This may take several seconds to complete.

The final box appears. Windows 9x, ME, and NT4 users should see a box similar to Figure 12. Windows 2000 users should see a box similar to Figure 13.



Figure 12 Windows 9x, ME, and NT4 - Finish Box



Figure 13 Windows 2000 - Finish Box

- 7 Choose the Finish button to complete the software installation.

Note for Windows 9x, ME, and NT4 Users: When you choose the *Finish* button, the MAKO Technologies Infineer LT4000 Installer will automatically shutdown your system in order to complete the software installation.

Now that you've installed the software you're ready to connect the MAKO Technologies Infineer LT4000 to your PC. Please see "Connecting the MAKO Technologies Infineer LT4000" on page 4 for instructions on how to make this connection.



User's Manual

Page 10

Uninstalling the MAKO Technologies Infineer LT4000 Software

The MAKO Technologies Infineer LT4000 software can be uninstalled from the CD or from within the Windows Add/Remove Properties box. To uninstall from within Windows see page 12. To uninstall using the CD start with Step 1 below.

- 1 To uninstall the MAKO Technologies Infineer LT4000 software, choose the "Software" option from the MAKO Technologies Infineer LT4000 CD welcome screen (Figure 14).



Figure 14 MAKO Technologies Infineer LT4000 Welcome Screen

- 2 If the installer detects that MAKO Technologies Infineer LT4000 software is installed on your computer, a screen similar to Figure 15 will appear.

From this screen select the "Uninstall the MAKO Technologies Infineer LT4000 Software" option. The uninstallation process is started.

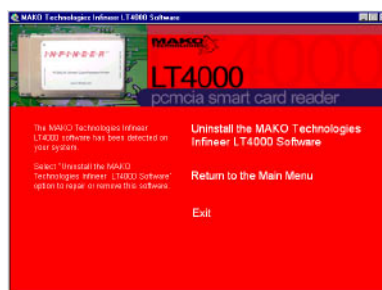


Figure 15 Uninstall the MAKO Technologies Infineer LT4000 Software



User's Manual

Page 11

- After choosing the “Uninstall the MAKO Technologies Infineer LT4000 Software” option in Step 2, a box similar to Figure 16 appears.

To continue the uninstallation select the Next> button

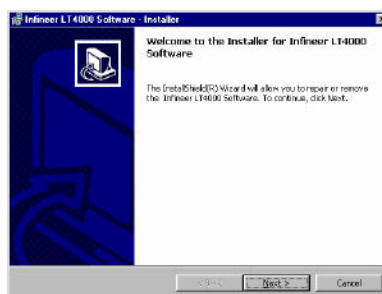


Figure 16 MAKO Technologies Infineer LT4000 Uninstallation Wizard

- The Program Maintenance box (Figure 17) appears. Check the Remove option and select the Next> button.

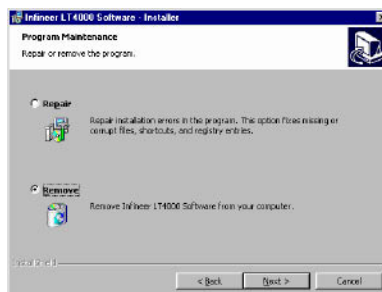


Figure 17 Program Maintenance Box



User's Manual

Page 12

- 5 A box similar to Figure 18 appears.
Select the Remove option to complete the uninstallation.
The MAKO Technologies Infineer LT4000 software components are now removed from your system.

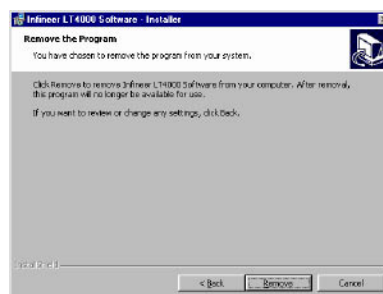


Figure 18 Confirm removal of the MAKO Technologies Infineer LT4000 Software

- 6 A box similar to Figure 19 appears.
Select the Finish button to complete the uninstallation and exit the installer.



Figure 19 MAKO Technologies Infineer LT4000 Software Uninstallation Complete

Uninstalling the MAKO Technologies Infineer LT4000 Software From Within Windows

The MAKO Technologies Infineer LT4000 Software can be uninstalled by choosing: Start> Settings> Control Panel from your Windows Toolbar.

In the Control Panel box that appears, double-click the Add/Remove Programs icon.

In the Add/Remove Programs Properties box, select "MAKO Technologies Infineer LT4000" displayed in the scroll-box.

Click the Add/Remove button to uninstall the MAKO Technologies Infineer LT4000 software.



LT4000

pcmcia smart card reader

User's Manual

Page 13

MAKO Technologies Reader Utility

The MAKO Technologies Reader Utility is automatically installed on your hard drive as part of the MAKO Technologies Infineer LT4000 installation process. This utility is an easy-to-use diagnostic tool for the MAKO Technologies Infineer LT4000. You can open the MAKO Technologies Reader Utility from your desktop at:

Start > Programs > MAKO Technologies > Tools > MAKO Technologies Reader Utility

In the unlikely event you experience technical difficulty with the MAKO Technologies Infineer LT4000 Smart Card Reader, MAKO Technologies Technical Support may ask that you supply information about the reader from the utility. (See page 13 for MAKO Technologies' technical support contact information.)

The MAKO Technologies Infineer LT4000 software must be installed and the smart card reader connected to your PC in order for the MAKO Technologies Reader Utility to perform certain functions.

Choose System Information to view details about your PC's operating system and installed MAKO Technologies Infineer LT4000 components.

Select Reader Status to retrieve information about the MAKO Technologies Infineer LT4000, communication protocols and inserted smart card.

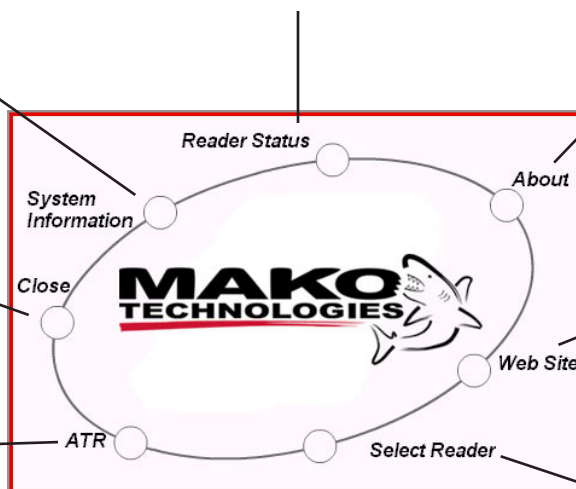
Choose About for more information on the MAKO Technologies Reader Utility.

Close the MAKO Reader Utility.

Choose Web Site to open a connection to www.mako-tech.com.

With a smart card inserted choose ATR to retrieve the card's "Answer to Reset." An ATR is a response that a smart card must give when it is powered by a reader. This response is required by the International Standards Organization (ISO).

Should you have more than one MAKO reader connected to your system the Select Reader option allows you to obtain information from each.





LT4000

pcmcia smart card reader





User's Manual

Page 14

Technical Support

MAKO Technologies offers basic technical support to MAKO Technologies Infineer LT4000 owners. This support is included with your reader purchase at no additional charge. Support IS LIMITED to the installation, connection and functionality of the MAKO Technologies Infineer LT4000. Support is not offered for applications developed or sold by companies other than MAKO Technologies. To obtain support for these applications, please contact the developer of the software or your service provider.

Access to MAKO Technologies' Technical Support is available through:

	Contact Information	Availability
E-mail 	support@mako-tech.com	Submit reports 24-hours a day. A response will be provided within two business days.
Phone 	813.925.0796	Phone support is available for the first 30 days. Support is provided Monday through Friday, 9am to 5pm EST.
FAX 	FAX technical support requests to: Mako Technical Support Team 813.925.0755	Submit reports 24-hours a day. A response will be provided within two business days.
Mail 	Mail technical support requests to: MAKO Technologies Attention: Technical Support Team 14230 Carlson Circle Tampa, FL 33626	A response will be provided within two business days after receipt of your request.

Before contacting the MAKO Technologies Technical Support Team, please make sure that you have read and followed the instructions in this document.



LT4000

pcmcia smart card reader

User's Manual

Page 15

Adobe® Acrobat® Reader™

Adobe Acrobat Reader allows you to view and print files in Adobe Portable Document Format (PDF) on any major platform. Acrobat Reader (Version 5.0) is available on the MAKO Technologies Infineer LT4000 Installation CD and can be installed by selecting the "Acrobat Reader" option from the CD's main menu.

To download the most recent version of Acrobat Reader from Adobe's Web site, select the Get Acrobat Reader icon below. An active Internet connection is required.

Adobe, Acrobat, and the Acrobat logo are trademarks of Adobe Systems Incorporated.





LT4000

pcmcia smart card reader

User's Manual

Page 16

MAKO Technologies LIMITED HARDWARE WARRANTY

This MAKO Technologies (hereinafter MAKO) limited product warranty extends to the original purchaser only.

MAKO warrants all electronic hardware products against defects in materials and workmanship for a period of one year from date of sale. If MAKO receives notice of such defects during the warranty period, MAKO will, at its option, either repair or replace products that prove to be defective.

Should MAKO be unable to repair or replace the product within a reasonable amount of time, the customer's alternate remedy shall be a refund of the purchase price upon return of the product to MAKO. This warranty gives the customer specific legal rights. Other rights, which vary from state to state or province to province, may be available; however, no rights or remedies other than those specifically set forth herein shall be available to the customer unless expressly provided for and required by such state or provincial law.

Exclusions

This limited warranty shall not apply to defects resulting from improper or inadequate maintenance by the customer, customer-supplied software or interfacing, unauthorized modification or misuse, operation outside of the environmental specifications for the product or improper site preparation and maintenance (if applicable).

Warranty Limitations

MAKO MAKES NO OTHER WARRANTY, EITHER EXPRESSED OR IMPLIED, WITH RESPECT TO THIS PRODUCT. MAKO SPECIFICALLY DISCLAIMS THE IMPLIED WARRANTIES OF MERCHANTABILITY OR FITNESS FOR A PARTICULAR PURPOSE.

In any state or province which does not allow the foregoing disclaimer, any implied warranty of merchantability or fitness for a particular purpose imposed by law in those states or provinces is limited to the one-year duration of the written warranty.

Exclusive Remedies

THE REMEDIES PROVIDED HEREIN ARE THE CUSTOMER'S SOLE AND EXCLUSIVE REMEDIES. IN NO EVENT SHALL MAKO BE LIABLE FOR ANY DIRECT, INDIRECT, SPECIAL, INCIDENTAL, OR CONSEQUENTIAL DAMAGES, WHETHER BASED ON CONTRACT, TORT, OR ANY OTHER LEGAL THEORY.

MAKO Technologies LIMITED SOFTWARE WARRANTY

This MAKO Technologies (hereinafter MAKO) limited product warranty extends to the original purchaser only.

90-Day Limited SOFTWARE Warranty

MAKO warrants the following for a period of ninety (90) days from your purchase of the product:

- (1) The SOFTWARE will perform substantially the functions described in the documentation provided by MAKO
- (2) The media on which the SOFTWARE is furnished will be free from defects in materials and workmanship under normal use.

The warranty period ends at the end of the ninety (90) day period and all warranties by MAKO regarding the product will at that time terminate. Your sole remedy under the warranty during this ninety (90) day period is that MAKO will undertake to correct within a reasonable period of time any reported "SOFTWARE Error"



LT4000

pcmcia smart card reader

User's Manual

Page 17

(failure of the SOFTWARE to perform substantially the functions described in the documentation), correct errors in the documentation, and * replace any magnetic media which proves defective in materials or workmanship on an exchange basis without charge. In order to make a claim under this warranty you must return the defective item with your receipt to MAKO, postage prepaid, within ten (10) days after the warranty period. If MAKO is unable to replace defective media or if MAKO is unable to provide corrected SOFTWARE or corrected documentation within a reasonable time, MAKO will, at its sole and exclusive option, replace the SOFTWARE with a functionally equivalent program at no charge to you.

MAKO does not warrant that the SOFTWARE will meet your requirements, that operation of the SOFTWARE will be uninterrupted or error-free, or that all SOFTWARE errors will be corrected. MAKO is not responsible for problems caused by changes in the operating characteristics of computer hardware or computer operating systems, which are made after the release of the SOFTWARE, or for problems in the interaction of the SOFTWARE with non-MAKO software. MAKO will have no responsibility to replace or refund the license fee of media damaged by accident, abuse or misapplication.

THE ABOVE WARRANTIES AND REMEDIES ARE EXCLUSIVE AND IN LIEU OF ALL OTHER WARRANTIES, WHETHER EXPRESSED OR IMPLIED, INCLUDING THE IMPLIED WARRANTIES OF MERCHANTABILITY, FITNESS FOR A PARTICULAR PURPOSE AND NON INFRINGEMENT, AND ALL OTHER REMEDIES. NO ORAL OR WRITTEN INFORMATION OR ADVICE GIVEN BY MAKO, ITS EMPLOYEES, DISTRIBUTORS, DEALERS OR AGENTS SHALL INCREASE THE SCOPE OF THE ABOVE WARRANTIES OR CREATE ANY NEW WARRANTIES.

SOME STATES DO NOT ALLOW THE EXCLUSION OF IMPLIED WARRANTIES, SO THE ABOVE EXCLUSION MAY NOT APPLY TO YOU. IN THAT EVENT, ANY IMPLIED WARRANTIES ARE LIMITED IN DURATION TO NINETY (90) DAYS FROM THE DATE OF DELIVERY OF THE SOFTWARE. THIS WARRANTY GIVES YOU SPECIFIC LEGAL RIGHTS. YOU MAY HAVE OTHER RIGHTS, WHICH VARY FROM STATE TO STATE.

Limitation of Remedies

REGARDLESS OF WHETHER ANY REMEDY SET FORTH HEREIN FAILS OF ITS ESSENTIAL PURPOSE, IN NO EVENT WILL MAKO BE LIABLE TO YOU FOR ANY SPECIAL, CONSEQUENTIAL, INDIRECT OR SIMILAR DAMAGES, INCLUDING, WITHOUT LIMITATION, DAMAGES FOR LOSS OF BUSINESS PROFITS, BUSINESS INTERRUPTION, LOSS OF DATA OR BUSINESS INFORMATION (OR OTHER PECUNIARY LOSS) ARISING OUT OF THE USE OF OR INABILITY TO USE THE SOFTWARE OR ANY DATA SUPPLIED THEREWITH EVEN IF MAKO OR ANYONE ELSE HAS BEEN ADVISED OF THE POSSIBILITY OF SUCH DAMAGES, OR FOR ANY CLAIM BY ANY OTHER PARTY.

SOME STATES DO NOT ALLOW THE LIMITATION OR EXCLUSION OF LIABILITY FOR INCIDENTAL OR CONSEQUENTIAL DAMAGES SO THE ABOVE LIMITATION OR EXCLUSION MAY NOT APPLY TO YOU.

IN NO CASE SHALL MAKO'S LIABILITY EXCEED THE PURCHASE PRICE FOR THE PRODUCT.



LT4000

pcmcia smart card reader

User's Manual

Page 18

MAKO Technologies Infineer LT4000 Frequently Asked Questions

The MAKO Technologies Infineer LT4000 is PC/SC certified. What does this mean?

The MAKO Technologies Infineer LT4000 has been tested and certified by Microsoft's Window Hardware Quality Labs for Windows 98, ME, 2000, and NT 4.0 operating systems.

The PC/SC compatible drivers provided for the MAKO Technologies Infineer LT4000 are based on Microsoft's implementation of the PC/SC Workgroup's specifications. The PC/SC Workgroup (Personal Computer/Smart Card) was created to address interoperability issues in personal computer/smart card applications. Infineer is an Associate Member of the PC/SC Workgroup.

What types of cards can the MAKO Technologies Infineer LT4000 support?

The MAKO Technologies Infineer LT4000 supports both asynchronous and selected synchronous cards.

Can I use the MAKO Technologies Infineer LT4000 with a desktop or laptop computer?

The MAKO Technologies Infineer LT4000 may be used with either laptop or desktop computer as long as the minimum system requirements (listed on page 2 of this manual) are met.

Can I connect and disconnect the MAKO Technologies Infineer LT4000 to my system at any time?

The MAKO Technologies Infineer LT4000 may be connected to your system at any time after its software is installed. However, Windows 9x, ME, and NT4 users should connect the MAKO Technologies Infineer LT4000 before rebooting their computer. This practice ensures that the system's Resource Manager (a utility that locates and manages the device) is started each time the system is started.

Follow the procedures on page 6 of this manual to properly disconnect the MAKO Technologies Infineer LT4000 from your computer.

How do I know which Infineer device drivers to install on my system?

The software installer on the MAKO Technologies Infineer LT4000 Installation CD handles this for you. The software installer is launched when you choose the "Software" option on the CD's welcome screen and then "Install the MAKO Technologies Infineer LT4000 Software" option on the subsequent screen. The installer automatically detects your system's operating system and installs the appropriate drivers. The MAKO Technologies Infineer LT4000 software must be installed on your system before you connect the reader to your PC.

I've read this entire manual and I'm experiencing difficulties with the MAKO Technologies Infineer LT4000. Who do I contact for assistance?

Please see page 14 in this User's Manual for a listing of technical support contacts.